



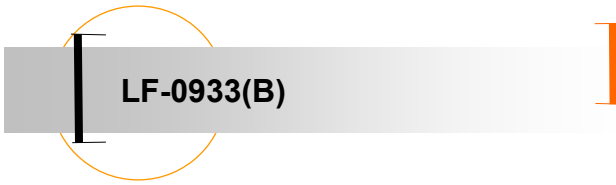
FORMOSA INDUCTOR CORP.  
 台灣電感科技股份有限公司  
 新北市三重區正義北路 195 號 8 樓  
 Tel: 02-8982-5858  
 Fax: 02-8981-8787

**PRODUCT SPECIFICATION**

<b>CUSTOMER</b>	
<b>CUSTOMER'S PRODUCT NAME</b>	
<b>FIC PART NUMBER</b>	LF-0933(B)
<b>FIC PRODUCT NAME</b>	
<b>DATE</b>	

THE SPECIFICATION IS	
<input type="checkbox"/> Received Under The Following Condition	
<ul style="list-style-type: none"> <li>■ <u>Signature:</u> _____</li> <li>■ <u>Title:</u> _____</li> <li>■ <u>Date:</u> _____</li> </ul>	<ul style="list-style-type: none"> <li>■ <u>Stamp</u></li> </ul>

INDUCTOR ENGINEER DIVISION			SALES DIVISION	
<b>PREPARED</b> <i>Amy</i>	<b>APPROVED</b> <i>Monica</i>	<b>AUTHORIZED</b> <i>Jacky</i>	<b>REVIEWED BY</b>	<b>AUTHORIZED</b> <i>Jacky</i>

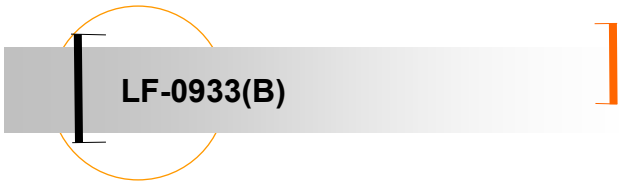


DIMENSION (Unit:mm)				
			A	20.9 ± 1.0
			B	20.9 ± 1.0
			C	9.3 ± 0.3
			D	41.8 ± 1.0
ELECTRICAL REQUIREMENTS:				
		TEST FREQ		REMARK:
		TEST FREQ		
Z	105 -0 Ω	TEST FREQ	25 MHz	
Z	190 -0 Ω	TEST FREQ	100 MHz	
		TEST FREQ		
COIL DATA	Qo= Lo= PF	TEST FREQ		
Winding	0.65 Φ X 100 mm 2U.E.W 1 TS			
TEST INSTRUMENTS				
1. RF LCR METER: HP4286A				

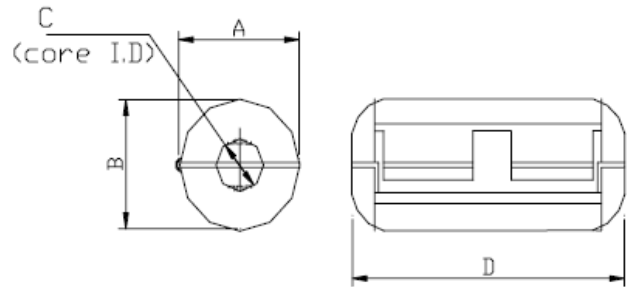
缺口尺寸檢驗依據如下表

CORE AΦ 尺寸(mm)	缺口限度 (mm)	缺口深度 (mm)
1-3	0.08	0.08
3.1-5	0.2	0.2
5.1-10	0.5	0.5
10.1-14.9	1	1
15-25.9	1.5	1.5
26以上	2	2

缺口只要在允許範圍內不影響電極特性



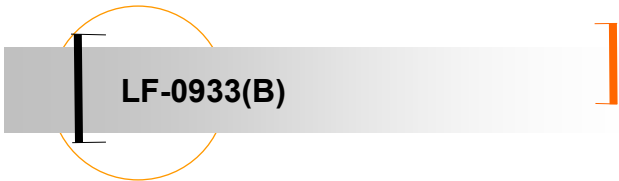
INSPECTION DATA			
PART NO.	LF-0933(B)		
ITEM			
COIL SPEC	0.65 Φ X 100 mm 2 U.E.W 1 TS		
COIL DATA	QO=	CO=	(PF)
TEST FREQ	FO=	Hz Ft=25,100 MHz	
TEMPERATURE	25 °C	Humidity	50 %



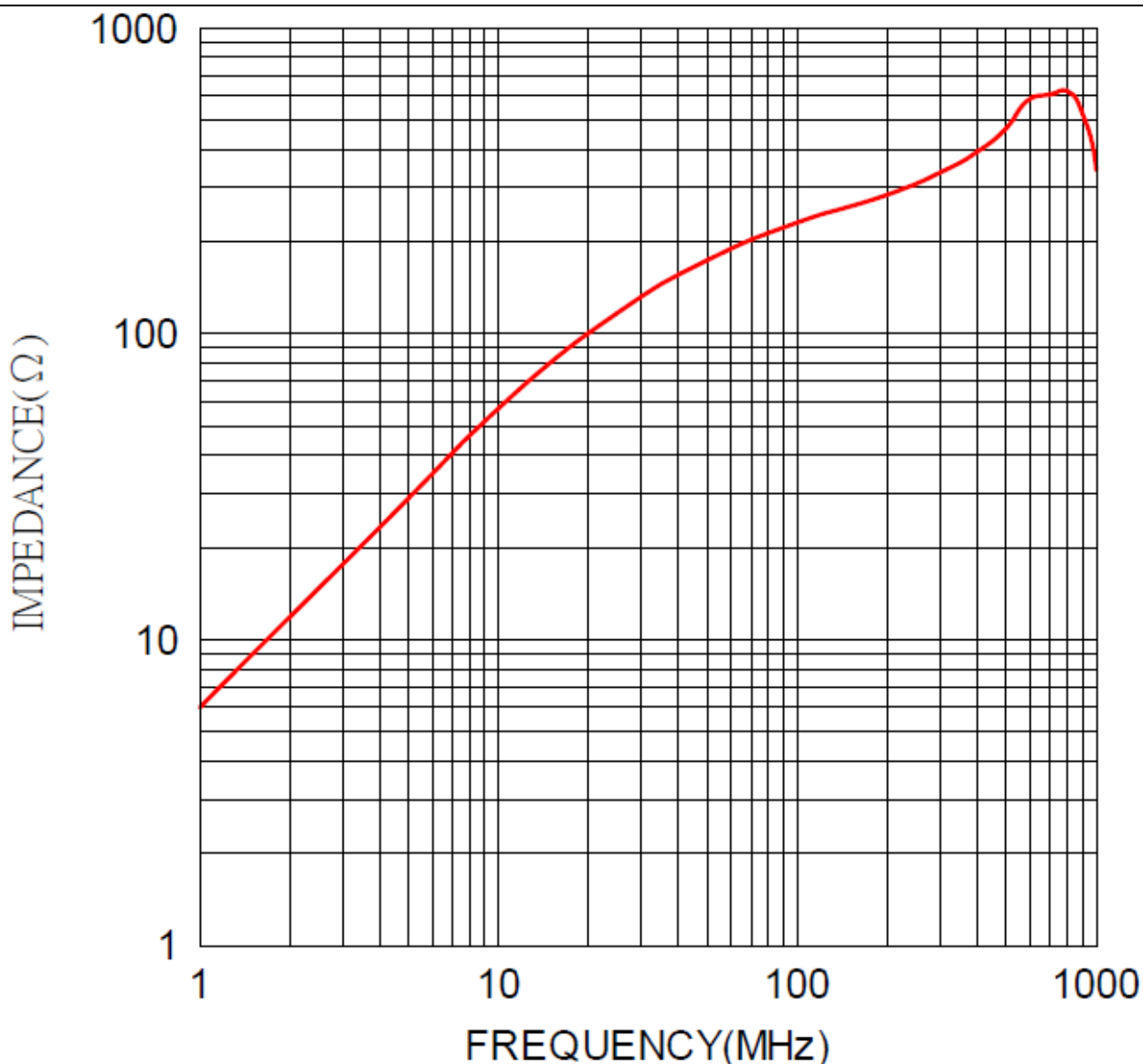
	ELECTRIC CHAREC.				DIMENSION(Unit:mm)									
	L	Q	Z	Z	A	B	C	D	E	F	G	H	I	
Spec			105.0	190.0	20.9	20.9	9.3	41.8						
+					1.00	1.00	0.30	1.00						
-			0	0	1.00	1.00	0.30	1.00						
1			122.0	231.0	20.76	20.22	9.30	41.94						
2			121.0	232.0	20.85	20.31	9.32	42.00						
3			121.0	232.0	20.81	20.27	9.33	41.99						
4			123.0	231.0	20.79	20.25	9.36	42.01						
5			122.0	233.0	20.87	20.30	9.37	41.97						
6			120.0	232.0	20.83	20.24	9.40	42.02						
7			120.0	234.0	20.82	20.26	9.31	41.97						
8			121.0	231.0	20.86	20.24	9.32	41.95						
9			121.0	232.0	20.80	20.27	9.38	41.93						
10			122.0	233.0	20.86	20.37	9.32	41.90						
X			121.3	232.1	20.83	20.27	9.34	41.97						
R			3.00	3.00	0.11	0.15	0.10	0.12						

TEST INSTRUMENTS

- RF LCR METER: HP4286A



### Z-F RESPONSE - LF-0933(B)



	1	5	10	25	50	100	200	300	400	500	600	700	800	900	1000
Z	6	29	57	120	174	231	285	336	393	469	585	605	621	523	342

(DATA BETWEEN 500MHz AND 1000MHz ARE FOR REFERENCE ONLY)